



# 2024 BROCHURE



1000L



5000L



500L

**SIP Fermentation System**

*Innovative Life Sciences Tools*

(Pilot Scale)

SIP Fermentation System / Bioreactor

\* Customized vessel is available

30L / 50L System

Motor  
Manual or automatic control of constant agitation speed

Peristaltic Pump  
Uses four Watson Marlow built-in peristaltic pumps for all your feeding needs

Stainless Steel Vessel  
Special designed heating jacket provides better heating efficiency

Control Station  
Large screen and graphical user interface



FS-30L (130x95x275 cm)

\* ASME standard



FS-50L

FS-50L (130x95x295 cm)

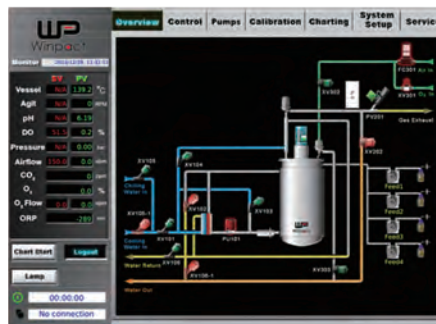
Features

- Wide range of vessel selection, from 30L to 50L working volume
- Colorful interface at 10.4" or above
- Fully automated process with remote monitoring
- 15-step automatic program setting
- Orbital welding ensures minimal residue buildup
- Highest grade construction with 316L stainless steel
- Jacket design provides astounding temperature control
- Exhaust pressure relief valve for maximum safety precaution
- Multiple safety design integration for peace of mind operation
- Remote monitoring & controlling software free from purchase
- Password protection for multiple users with special requirements
- Various optional devices for process optimization and needs
- Ethernet communication with Winpact SCADA software, and IP address

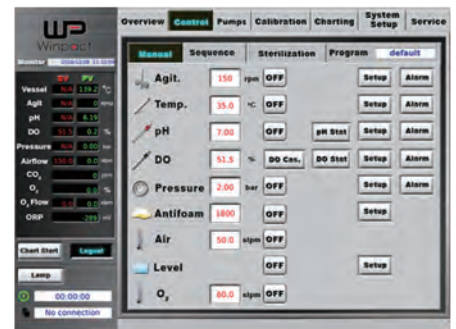


Four-staged DO cascade

15-Step programmable PID control



Immediate visualization on operation overview



Easy and intuitive operation for manual and sequence control



One-Touch automatic sterilization for vessel and system tubing



Online system calibration with system feedback



System expansion with various optional devices

**SIP Fermentation System / Bioreactor (Pilot Scale)**



Mechanical seal with auto generated lubricant and automatic cooling device

Harvest valve  
Sanitary level  
diaphragm type



Detachable aseptic  
feeding device



(Approx. 170Wx130Dx245H cm, Open distance of headplate lift : 60 cm)

**100L System**



\* Operating ladder is optional.



Pump

**200L System**

(Approx. 200Wx150Dx330H cm, Open distance of headplate lift : 40 cm)

Winpact offers pilot and production scale bioreactor/fermentation systems for all of your large scale fermentation needs. Our standard SIP Production Scale Fermentation System is constructed with BPE standard piping with orbital welding and top grade automatic valves to allow stable and repeatable result for every experiment. All of our features are designed to provide a high level of productivity and automation while maintaining a low operation cost. All other great features including total sterilization process, mechanical seal break indication, golden vessel ratio design and complete selection of optional devices for optimizing the fermentation process.

**Features**

- Wide range of vessel selection, from 100L to 1000L working volume
- Multi-lingual 12" colored graphical control interface
- Fully automated process with remote monitoring
- 15-step automatic program setting
- Orbital welding ensures minimal residue buildup
- Highest grade construction with Stainless Steel SUS316L
- Hive jacket design provides astounding temperature control
- Exhaust pressure relief valve for maximum safety precaution
- Multiple safety design integration for peace of mind operation
- Remote monitoring & controlling software free from purchase
- Password protection for multiple users with customized access levels
- Various optional devices for process optimization and needs
- Ethernet communication with Winpact SCADA software, and IP address



- Pneumatic valves for accurate and automatic control  
- Orbital welding provides top quality



Monitor page for operation overview



Automatic and manual operation



Automatic sterilization process



Online system calibration

\* All images are for reference only, actual products might differ from the pictures above.  
\* Technical specifications subject to change without notice.

(Production Scale)

\*For system over 200L, please contact Major Science or authorized distributors for more information.



500L System

(Approx. 300Wx1900Dx360H cm)



1000L System

(Approx. 330Wx340Dx450H cm)

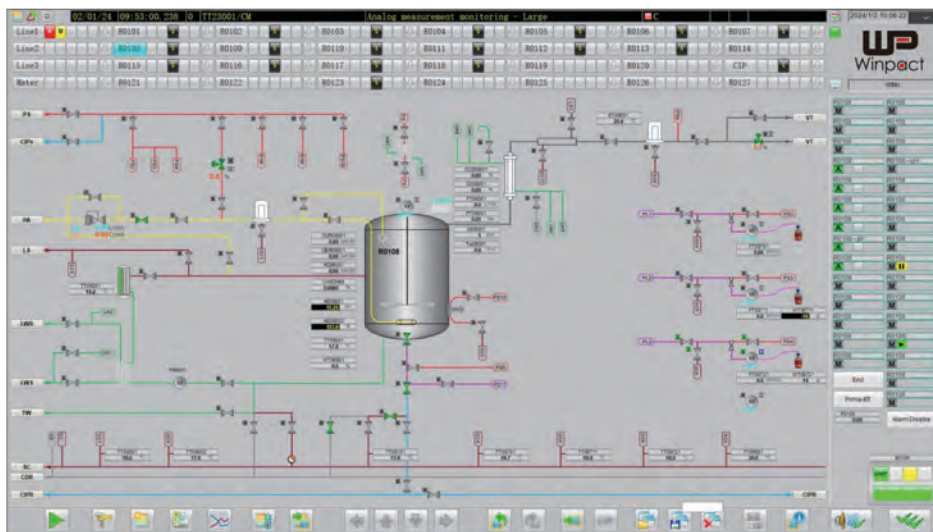


5000L System

GMP Fermenter/Bioreactor with Siemens S7 series PLC Control System



\*For reference only, subject to practice.





[www.majorsci.com](http://www.majorsci.com)

[info@majorsci.com](mailto:info@majorsci.com)

### Taiwan Office

No. 156, Sec. 1, Guoji Rd., Taoyuan Dist.,  
Taoyuan City 33061, Taiwan  
T/+886-3-3762878  
F/+886-3-3761310

### US Office

19959 Sea Gull Way  
Saratoga, CA 95070  
U.S.A.  
T/ +1-408-366-9866  
F/ +1-408-446-1107

### Shanghai Office

Room 612, International business exhibition center,  
9300 Hunan Road, Pudong, Shanghai, China  
National toll-free No.:400-823-9177  
T/ +86-21-50795277  
F/ +86-21-50795277

### India Office

D.No.7-143, 2nd Floor,  
St.No.2,Nagendra Nagar,  
Habsiguda, Hyderabad-500007.  
India  
T/ +91-40-27001515  
T/ +91-40-27001586

